



TRO  
CEL  
LEN

INSULATION

# TROCELLEN HIGH TEMP

Thermal insulation for piping

Thermal insulation



# High Temp

**TROCELLEN HIGH TEMP** is a closed-cell, chemically cross-linked polyethylene foam, finished outside with an embossed scratch-resistant film and coupled with polyester non-woven.

The product is available in sleeves, thicknesses 13 and 20 mm, and in rolls, thicknesses 15 and 20 mm.

It is certified class 1 according to UNI 8457 and UNI 9174.



HIGH TEMP with copper pipe

TROCELLEN HIGH TEMP PIPE INSULATION - SLEEVE RANGE		
THICKNESS mm	INTERNAL DIAMETER mm	SLEEVE LENGHT/BOX mm
13	18	150
	22	130
	28	120
20	18	90
	22	80
	28	70
	35	70
	42	60
Net standard lenght 2.0 m - carton box packaging		

TROCELLEN HIGH TEMP PIPE INSULATION - ROLL RANGE		
THICKNESS mm	ROLL WIDTH m	ROLL LENGTH m
13	1,5	120
20	1,5	120

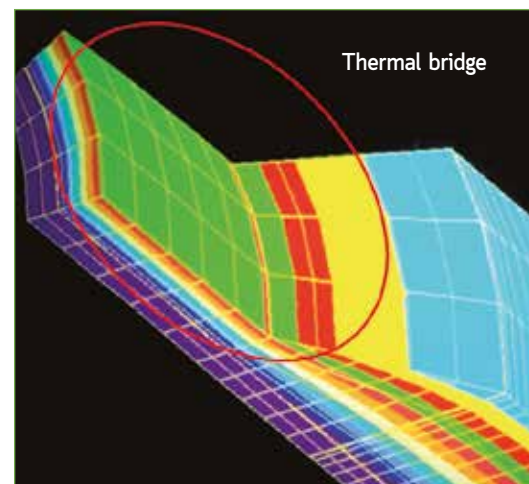
## CHARACTERISTICS

**TROCELLEN HIGH TEMP** is the ideal solution for the thermal insulation of high temperature piping.

Characteristics and advantages:

- Made of long lasting closed cell polyethylene insulation foam
- Operating temperature: 180 °C (peak), 150 °C (standard)
- Thermal conductivity coefficient at 10°C: 0,0359 W/mK
- Constant insulation value for at least 23 years, probably longer\*
- Fire safe
- Closed cells, in order to inhibit water absorption
- Clean, non toxic, mould and bacteria resistant, odorless
- Flexible enough to follow tight angles and strong enough to withstand rough handling
- For indoor as well as outdoor applications
- Very economical.

\* TROCELLEN tested after 23 years of operation found the same insulating value. Test reports available on request.



Thermal curve simulation of a partially insulated section of piping containing coolant at 7°C, showing temperature trend.

The environmental conditions mean the dew point=23°C: thermal bridging occurs on the non-insulated surface of the pipe, leading to condensation.

## ITEM SPECIFICATIONS

Closed-cell, chemically cross-linked polyethylene foam, finished outside with an embossed scratch-resistant film, colour ivory, and coupled with polyester non-woven.

Suitable for the thermal insulation of high temperature piping.

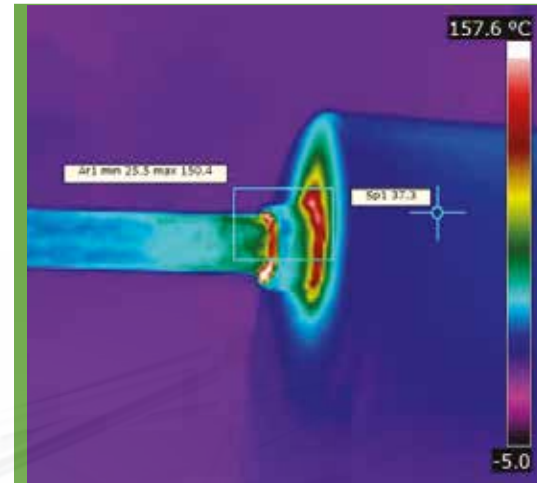
- Operating temperature: 180 °C (peak), 150 °C (standard)
- Reaction to fire: CL1
- Thermal conductivity coefficient at 10 °C ( $\lambda$ -value): 0,0359 W/mK (0,031 kcal/mh°C)
- Water vapour diffusion factor ( $\mu$ -value)  $\geq$  7000
- Weather tolerant insulation and usable even outdoor.



HIGH TEMP

### TECHNICAL DATA

TECHNICAL CHARACTERISTICS	NORM	UNIT	TROCELLEN HIGH TEMPERATURE
Application			Thermal insulation for high temperature piping
Material			Cross-linked Polyethylene foam + Polyester non-woven
Operating temperature	Internal method	°C	180 (peak) - 150 (standard)
Thermal conductivity coefficient at 10 °C ( $\lambda$ -value)	EN 12667	W/mK	0,0359 (PE + PET)
Water vapour diffusion factor ( $\mu$ -value)	EN ISO 12572	-	$\geq$ 7000
UV rays resistance	EN ISO 4892-2/06	years	1,5 (minimum)
Reaction to fire	UNI 8457/ UNI 9174		CL1



Thermographic image of a pipe insulated with HIGH TEMP

## INTERNATIONAL LOCATIONS

Lead Plant

### TROCELLEN Italia S.p.A.

Sales office  
Via Dante, 3  
20867 Caponago (MB), Italy  
Ph. +39 02 959 621  
Fax +39 02 959 62 235

### TROCELLEN GmbH

Mülheimer Straße 26  
53840 Troisdorf, Germany  
Ph. +49 2241 2549000  
Fax +49 2241 2549099

### TROCELLEN Ibérica S.A.

C/Avila, s/n  
28804 Alcalá de Henares, Spain  
Ph. +34 91 885 55 00  
Fax +34 91 885 55 01

### Polifoam Plastic Processing Co. Ltd

Táblás u. 32  
1097 Budapest, Hungary  
Ph. +36 1 347 98 00  
Fax +36 1 280 67 08

### TROCELLEN S.E.A. Sdn Bhd

Lot 2213, Kg. Batu 9 Kebun Baru,  
Jalan Kasawari  
42500 Telok Panglima Garang  
Selangor Darul Ehsan, Malaysia  
Ph. +60 3 3122 1213  
Fax +60 3 3122 1211

[insulation@trocellen.com](mailto:insulation@trocellen.com)

## TROCELLEN\*

Trocellen is the first choice European polyolefin foam-solution provider. Through continuous innovations and successful partnerships we dedicate ourselves to one goal: protecting and providing comfort for people.

After more than 40 years, with 600 employees at seven sites and many cooperating companies, various partner universities, institutes and designers we offer solutions for our business partners in various industries such as construction and insulation, automotive, leisure and professional sport, adhesive tapes, footwear and packaging.

\*Trocellen is the member of Furukawa Group.



FOLLOW US ON  
TWITTER



CONTACT US ON  
LINKEDIN



[www.trocellen.com](http://www.trocellen.com)

Download Trocellen App for free  
from the Official Website

50° 49' N	07° 09' O	<b>Germany</b>
40° 28' N	03° 21' O	<b>Spain</b>
41° 53' N	12° 28' O	<b>Italy</b>
47° 30' N	19° 02' O	<b>Hungary</b>
02° 54' N	101° 28' O	<b>Malaysia</b>
35° 40' N	139° 49' O	<b>Japan</b> FURUKAWA

